

**URBAN REGENERATION**  
**MIRCEA cel BATRAN SQUARE**

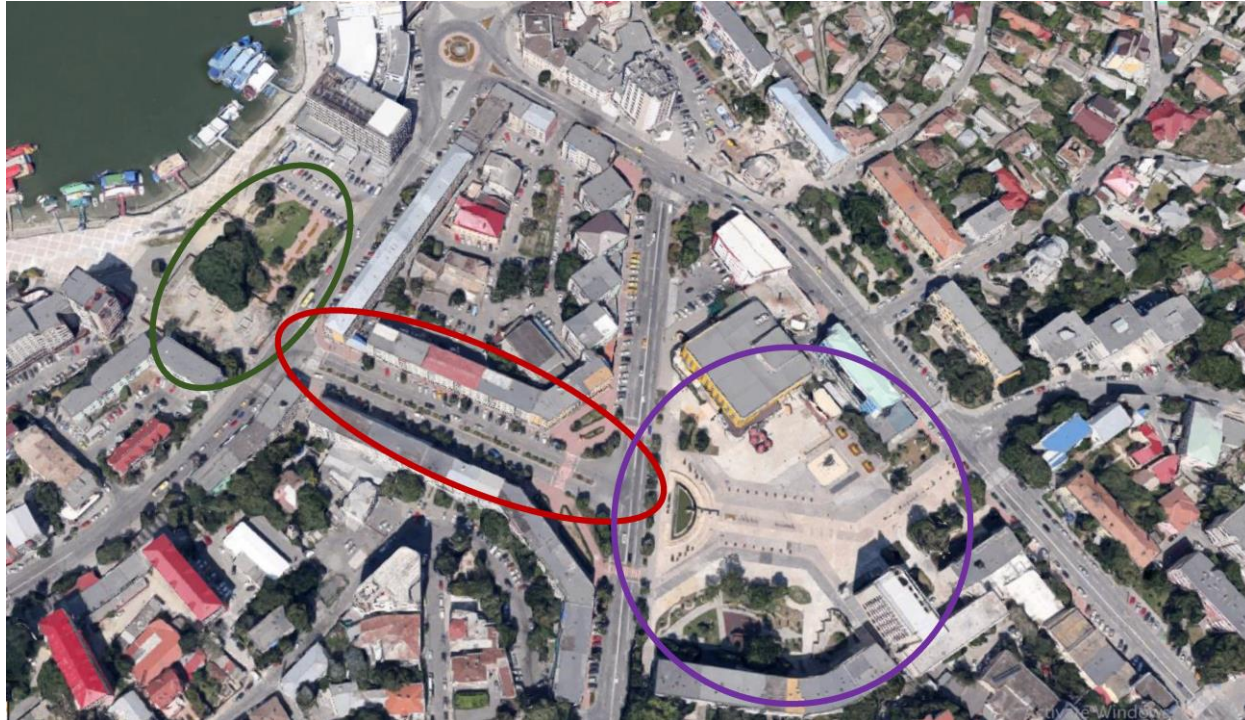
**APRIL 11, 2023\_APM**

[Type text]

TREI FANTANI PARK

UNIRII STREET

CIVIC SQUARE (McB)



## UNIRII STREET



- urban corridor connecting Embankment and Civic Square
- The vocation to become the main commercial street of the city

### **Pedestrian**

- Narrow sidewalks, insufficient space for commercial development
- Too wide intersections with Babadag and Isacsei streets
- Inaccessible green space (located between car lanes)

### **Vehicles**

- Redundant auto circulation  
*doubles the connection of Isacsei and Babadag str. through Pacii str.*
- Does not feed the islands behind the flat buildings
- Only used as a shortcut or parking lot

## CIVIC SQUARE (McB)



- Extremely important central urban space, both symbolic and functional
- The seat of the local government, of the representative institutions
- The vocation to become the real center of the city
- Space lacking structure, coherence, attractiveness
- Imperceptible zoning, little used without periodic interventions (fairs, events, etc.)
- Inaccessible urban fountain, wrongly designed

## PROJECT ELEMENTS

- **Keeping or improving the proposed zoning:**  
*urban market, urban forest, events area*
- **Integration of the WATER element in the project, in interactive, contemporary formulas**
  - **Additional tree planting**
  - **Creating elements of urban memory**  
(ex: Colonnade of Tulcea Ethnicities)

## **GENERATING IDEAS**

- **Elimination of permanent car traffic**
- **Construction of a pavement at the same level along the entire width of Unirii corridor (without curbs, sidewalks)**
  - **Planting additional trees compared to the existing ones**
  - **Creation of elements of urban furniture such as pergola**